



GAT MONTHLY MEMBERSHIP PROGRESS REPORT

Results as of: 1/31/2022

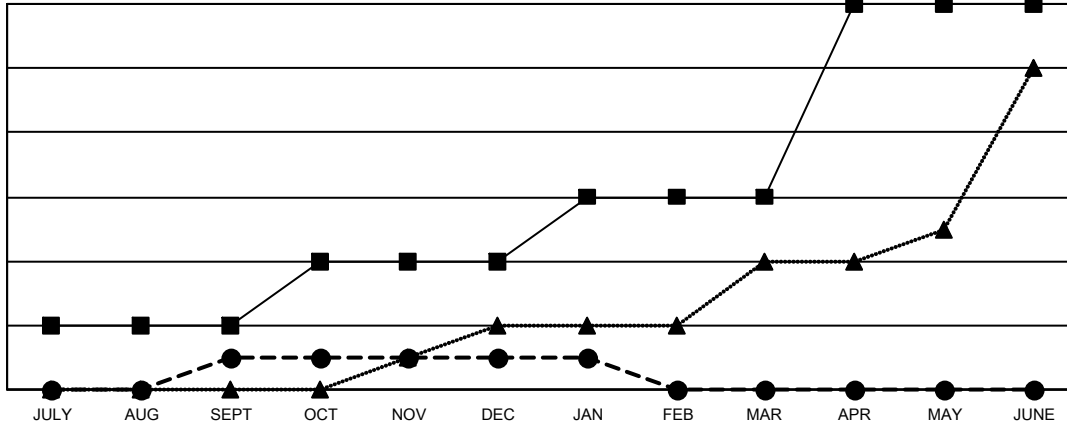
Multiple District 27

LOCATION: WISCONSIN

Clubs			
RESULTS FOR 2021-2022			
QUARTER	NEW CLUB GOAL	NEW CLUBS	DROPPED CLUBS
JULY/AUG/SEPT	2	1	0
OCT/NOV/DEC	2	0	6
JAN/FEB/MAR	2	0	0
APR/MAY/JUNE	6	0	0

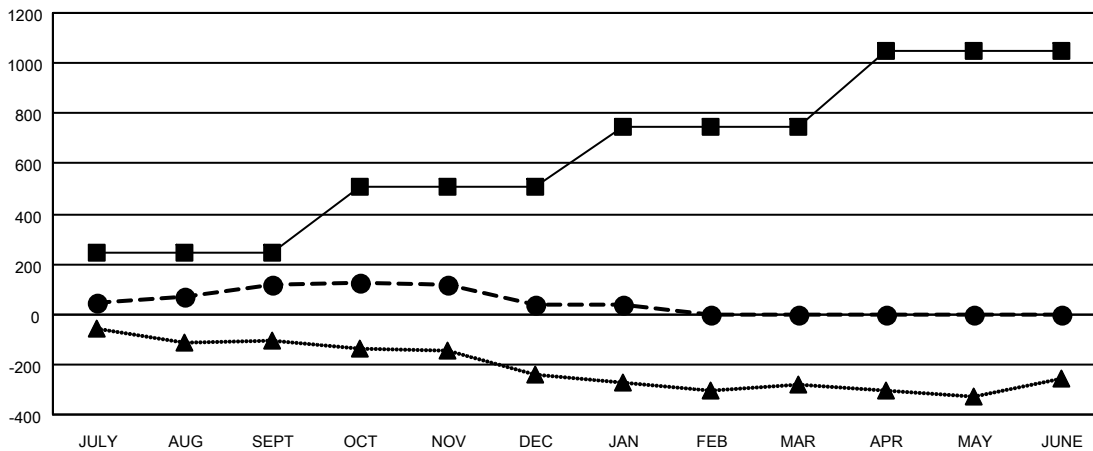
Members			
RESULTS FOR 2021-2022			
QUARTER	MEMBER GROWTH NET GOAL	MEMBER GROWTH ACTUAL	DROPPED MEMBERS ACTUAL (including transfers)
JULY/AUG/SEPT	243	461	312
OCT/NOV/DEC	265	362	395
JAN/FEB/MAR	241	170	156
APR/MAY/JUNE	301	0	0

GOALS AND ACTUAL NEW CLUBS CUMULATIVE



- - CURRENT YEAR GOALS FOR NEW CLUBS
- - CURRENT YEAR ACTUAL NEW CLUBS
- ▲ - LAST YEAR ACTUAL NEW CLUBS

GOALS AND ACTUAL MEMBERS CUMULATIVE



- - MEMBER GROWTH NET GOAL
- - MEMBER GROWTH ACTUAL
- ▲ - LAST YEAR MEMBERSHIP ACTUAL

DROPPED CLUBS: 6	
DROPPED MEMBERS	
DECEASED	130
CLUB CANCELLED	51
OTHER	682
TOTAL	863

278 CLUBS OF 515 ADDED 1 OR MORE NEW MEMBERS

[CLICK HERE FOR CUMULATIVE MEMBERSHIP DATA](#)

GENDER DISTRIBUTION	
MALE	12,127 (72.10%)
FEMALE	4,692 (27.90%)
NON BINARY	0 (0.00%)
PREFER NOT TO ANSWER	0 (0.00%)
TOTAL FAMILY UNIT MEMBERS	3,454
FAMILY MEMBERS PAYING HALF DUES	1,754